

# IVY

(CLING TO ME)



MADE IN USA



WORDS BY  
ALEX ROGERS

MUSIC BY  
ISHAM JONES  
AND  
JIMMY JOHNSON

Irving Berlin, Inc.  
MUSIC PUBLISHERS  
1607 Broadway New York *perret*

The Tune That Sets You Dancing

# TRULY

Words by  
BENNY DAVIS

Music by  
VINCENT ROSE

CHORUS

*optional*

Believe me Tru - ly, I want you on - ly Tru - ly,

My life is lone - ly You brought the sun - - shine

The musical score for 'Truly' consists of a vocal line and a piano accompaniment. The vocal line is written in a single treble clef with a key signature of one sharp (F#) and a common time signature. The piano accompaniment is written in grand staff notation (treble and bass clefs). The score includes a chorus section with two lines of lyrics. The first line of the chorus is 'Believe me Tru - ly, I want you on - ly Tru - ly,' and the second line is 'My life is lone - ly You brought the sun - - shine'. There is an 'optional' marking above the first line of the vocal staff. The piano accompaniment features a rhythmic pattern of eighth and sixteenth notes, with some chords and arpeggios.

A Waltz Ballad That Should Be In Every Home

# While The Years Roll By

Words by  
SAM M. LEWIS  
& JOE YOUNG

Music by  
JACK AUSTIN

CHORUS

More and more I want you, Since we had to part;

*p-mf dolce*

Each to - mor-row, Adds a sor-row, To my emp - ty heart.

The musical score for 'While The Years Roll By' is a waltz ballad in 3/4 time with a key signature of one sharp (F#). It features a vocal line and a piano accompaniment. The vocal line is written in a single treble clef. The piano accompaniment is written in grand staff notation. The score includes a chorus section with two lines of lyrics. The first line is 'More and more I want you, Since we had to part;' and the second line is 'Each to - mor-row, Adds a sor-row, To my emp - ty heart.'. The piano accompaniment is marked 'p-mf dolce' and features a waltz-like rhythm with a mix of eighth and sixteenth notes.

Copyright MCMXXII by IRVING BERLIN Inc., 1607 Broadway, New York  
International Copyright Secured All Rights Reserved

**COPIES FOR SALE WHEREVER MUSIC IS SOLD**

**These Numbers can also be had for your Phonograph and Player Piano**

SM5302

# IVY

3

Words by  
ALEX ROGERS

(Cling To Me)

Music by  
ISHAM JONES  
and  
JIMMY JOHNSON

Moderato

The piano introduction is in 2/4 time, marked Moderato. It features a treble and bass clef with a key signature of one sharp (F#). The music starts with a forte (f) dynamic and ends with a sforzando (sfz) dynamic. The melody is primarily in the treble clef, with a supporting bass line in the bass clef.

The first vocal line consists of two staves: a vocal line in the treble clef and a piano accompaniment in the bass clef. The piano accompaniment is marked piano (p). The lyrics are: "Iv - y, Iv - y, Iv - y, Iv - y,". The piano accompaniment features a rhythmic pattern of eighth and sixteenth notes.

The second vocal line continues the melody. The lyrics are: "way down in South Car'lin-a, Your a heart entw-in-er Iv - y, steam engines jus' a hum-min', Iv-y, I'm a-com-in' Iv - y,". There are handwritten annotations above the staff: "1 2 3 4" above the first four measures. The piano accompaniment continues with the same rhythmic pattern.

The third vocal line concludes the phrase. The lyrics are: "Iv - y, Will you be wait - ing for me like you said you'd be Iv - y, Jus' like I told you I'd do com-in' home to you". The piano accompaniment continues with the same rhythmic pattern.

Iv - y, Iv - y, If you would write me may - be,  
 Iv - y, Iv - y, My heart with love's so load - ed,

I could stand it ba - by, But you won't, -  
 Hard for me to tote it, Hope an' trust, - Should

If you don't, - Im com - in'back to Car - o -  
 my heart bust, - You'll know it bust - ed bring in'

- lin - a and bring my love with me.  
 all of my love back home to you.

CHORUS

And iv-y may be when you see just how sweet

The first system of the chorus features a vocal line in treble clef and piano accompaniment in grand staff. The key signature has one sharp (F#) and the time signature is 4/4. The lyrics are "And iv-y may be when you see just how sweet". The piano part includes a dynamic marking of *p-f* (piano-forte) and various articulation marks like accents and slurs.

I can be And when you see the load of love I am bring - ing,

The second system continues the vocal line and piano accompaniment. The lyrics are "I can be And when you see the load of love I am bring - ing,". The piano accompaniment features a prominent bass line with a long note in the second measure.

A-round my heart a-gain I know you'll be cling - ing, Iv - y,

The third system continues the vocal line and piano accompaniment. The lyrics are "A-round my heart a-gain I know you'll be cling - ing, Iv - y,". The piano accompaniment has a steady bass line.

come on cling I'll bring a wed-ding ring Oh, Iv-y won't you come and

The fourth system continues the vocal line and piano accompaniment. The lyrics are "come on cling I'll bring a wed-ding ring Oh, Iv-y won't you come and". The piano accompaniment features a more active bass line.

wrap yourself all a-round my heart And iv-y heart.

The fifth system concludes the chorus with two endings. The lyrics are "wrap yourself all a-round my heart And iv-y heart." The first ending leads back to the beginning of the chorus, and the second ending provides a final resolution. The piano accompaniment includes a *fz* (forzando) marking at the end.



# SONG GEMS

FROM

## IRVING BERLIN'S

SECOND ANNUAL

# MUSIC BOX REVUE

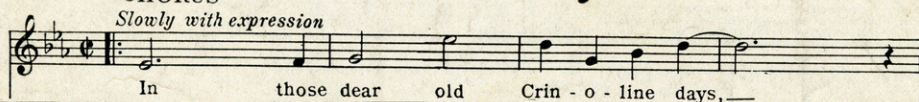
### CHORUS Lady Of The Evening



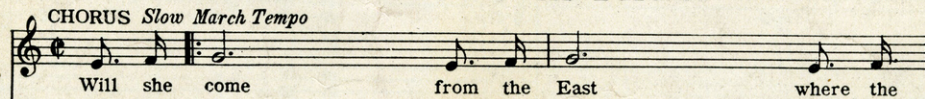
### CHORUS Pack Up Your Sins And Go To The Devil



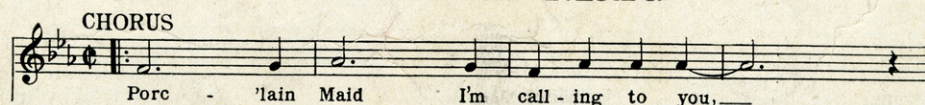
### CHORUS Crinoline Days



### CHORUS Will She Come From The East?



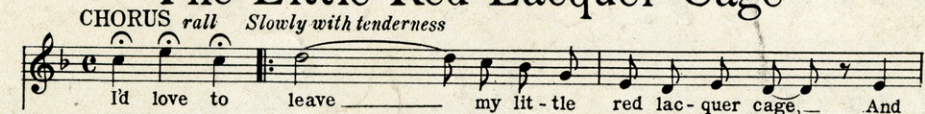
### CHORUS Porcelain Maid



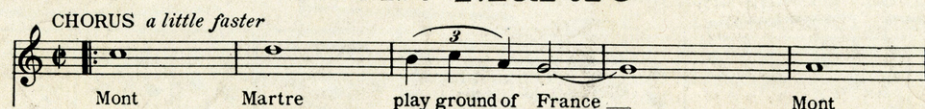
### CHORUS Bring On The Pepper



### CHORUS The Little Red Lacquer Cage



### CHORUS Mont Martre



Copyright MCMXXII by IRVING BERLIN Inc., 1607 Broadway, New York  
International Copyright Secured All Rights Reserved

## COPIES ON SALE WHEREVER MUSIC IS SOLD