

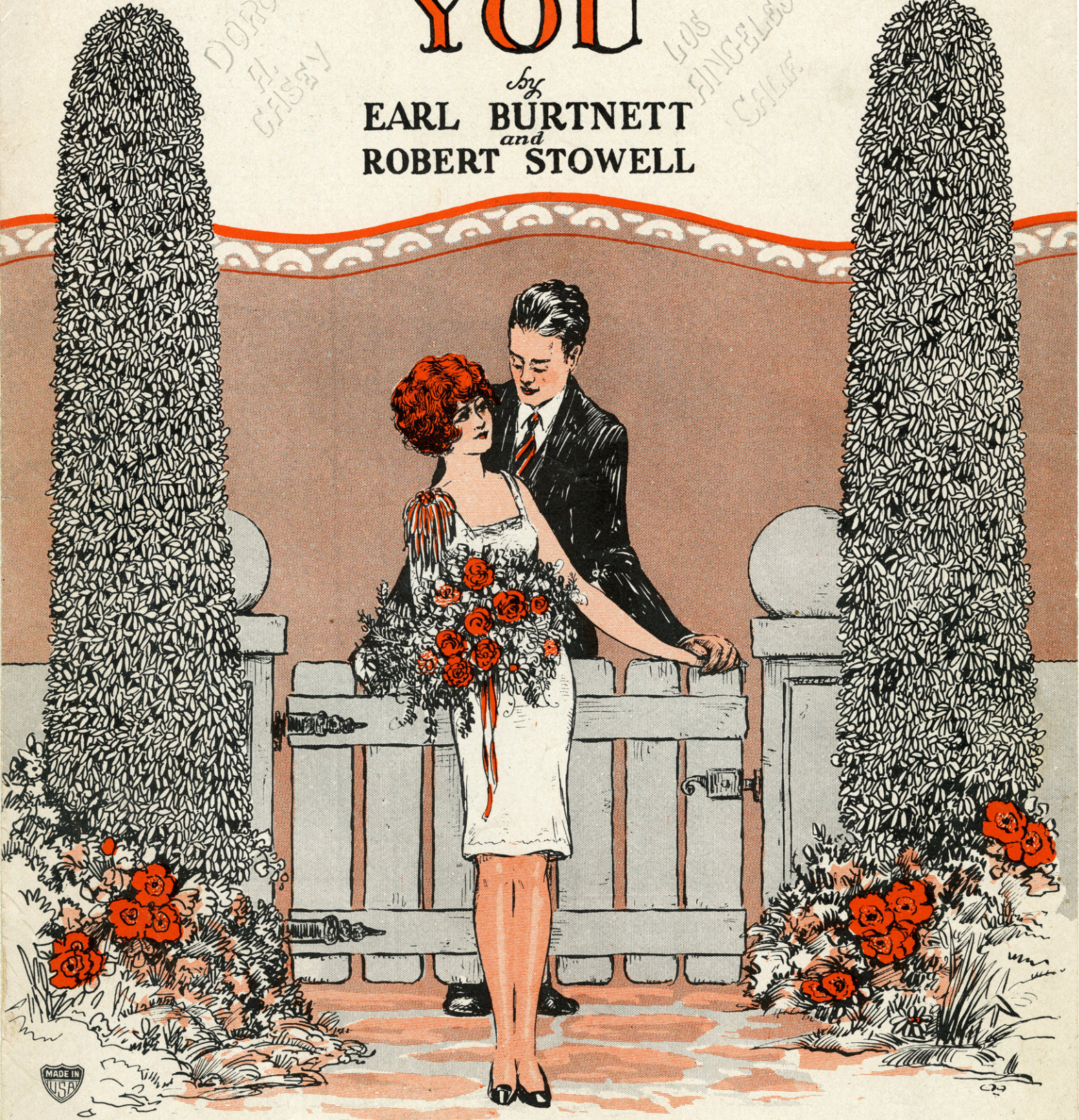
WITH UKULELE ARRANGEMENT

# IF I SHOULD LOSE YOU

by  
**EARL BURTNETT**  
and  
**ROBERT STOWELL**

DOROTHY  
AL. CRISBY

LOS ANGELES  
CALIF



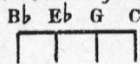
P. A. M.  
GRIFFITH

Sherman,  & Co.  
SAN FRANCISCO

SM 7362

# IF I SHOULD LOSE YOU

Tune Uke as follows:



by EARL BURTNETT  
and ROBERT STOWELL

Moderato

mf

Ab Ab7 Db Dbm Ab

Spring - time brings the flow - ers,  
Ros - es need the sun - shine,

mp

Bbm Dbm Eb7 Ab

And the sun - shine too, \_\_\_\_\_  
And the morn - ing dew, \_\_\_\_\_

Ab Ab7 Db Dbm Ab

Spring - time brought me sun - shine, Be - cause the  
 My love's like the ros - es For that's how

G7 G Aug. Cm

spring - time brought me on you I  
 I de - pend on you The






Dbm F7 Bbm Fm

nev - er knew I could feel this way But  
 ros - es die and fade a - way I







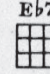
Bb7 Eb7

now I re - al - ize more each day.  
 hope and pray that you'll al - ways stay.




Chorus


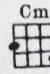

If I should lose you \_\_\_\_\_ If ev-er I lose you, —Where could I

wan - der, — what could I do? — Each bright to - mor - row —

— Would fill me with sor - row, — For each gay day would be

gray with-out you \_\_\_\_\_ If I should lose you \_\_\_\_\_

F7 Bb7 Eb7

I could-n't go on I would - n't choose to

Eb7 C7 Ab dim. Db Eb7

Be-cause you'd be gone With ev - 'ry day - break,

Eb7 dim. F7 Bbm Dbm

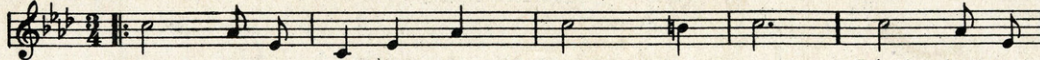
I'd find a new heart ache, If I should ev - er

Eb7 Ab 1 Ab 2

lose you dear. If I should dear.

# PALS OF LONG AGO

Chorus



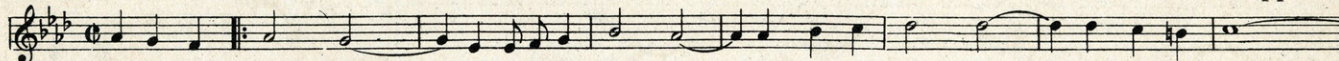
Where are you now, Pals of long a - go, Friends that were

Copyright MCMXXVII by Sherman, Clay & Co., San Francisco.

# IF I SHOULD LOSE YOU

Ballad Fox Trot Hit  
with an appeal.

Chorus

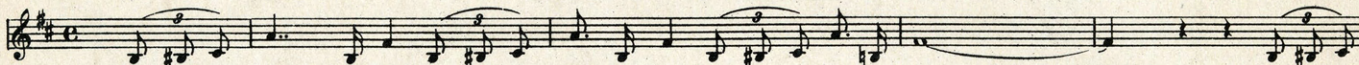


If I should lose you — If ev-er I lose you, — Where could I wan - der, — what could I do? —

Copyright MCMXXVII by Sherman, Clay & Co., San Francisco.

# DOLL DANCE

Fox Trot Hit



What a pe - cul - iar tune, Thrill-ing me night and noon, What a pe - cul - iar tune. — Has such a

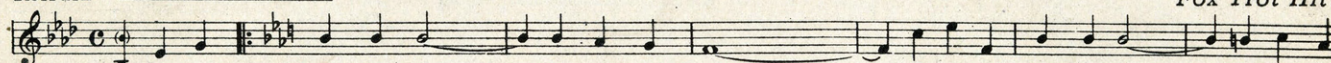
Copyright MCMXXVII by Sherman, Clay & Co., San Francisco

# THE WINDING TRAIL

Melodious  
Fox Trot Hit.

Refrain

Melody of "Old Refrain"  
Published by Special Permission of  
Carl Fischer Inc. New York



I'm on the wind - ing trail — to home sweet home — I'm on the home - ward road — no more to

Copyright MCMXXVII by Sherman, Clay & Co., San Francisco.

# SOMEBODY LIED ABOUT ME

Waltz Ballad.

Chorus



When some - bod - y told you that I've been un - true, Some - bod - y lied a - bout

Copyright MCMXXVII by Sherman, Clay & Co., San Francisco

# SCHOOL DAY SWEETHEARTS

A favorite everywhere.

CHORUS

*a tempo*



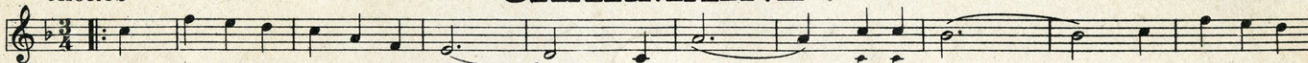
Can't we be the same school-day sweet - hearts? Let us wan - der back once more, — Thru the lit - tle

Copyright MCMXXVIII by Sherman, Clay & Co., San Francisco

# CHARMAINE

Waltz Hit with Ukulele arrangement.

CHORUS



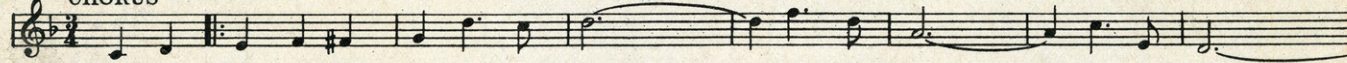
I won - der why you keep me wait - ing, Char - maine — cries in vain, — I won - der when

Copyright 1926 by BELWIN, Inc., N. Y. C.  
Copyright assigned 1927 to Sherman, Clay & Co., San Francisco

# DIANE

Melodious Waltz Hit.

CHORUS



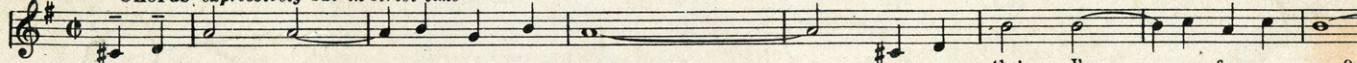
"I'm in Heav - en when I see you smile — Smile for me — my Di - ane —

Copyright MCMXXVII by Sherman, Clay & Co., San Francisco

# DO YOU LOVE ME?

Fox Trot Ballad  
with a punch.

Chorus, *expressively but in strict time*

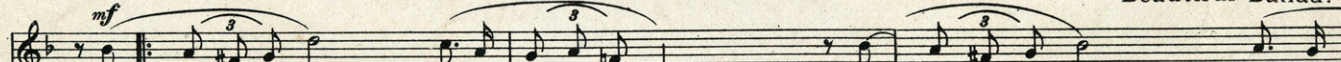


Do you love me — when skies are gray? — Ev - en tho' I'm — so far a - way? —

Copyright MCMXXVII by Sherman, Clay & Co., San Francisco.

# ESTRELLITA

Beautiful Ballad.



Oh shine on to - night In your pa - lace a - bove Your sil - ver - y light Leads me  
Tu e - res es - tre lla mi fa - ro de a - mor Tu sa - bes que pron - to he

Copyright MCMXXVII by Sherman, Clay & Co., San Francisco

Copies for sale  
wherever music is sold.

PUBLISHED BY  
Sherman,  & Co.  
SAN FRANCISCO

These numbers can also  
be had for your phonograph  
and player piano.