

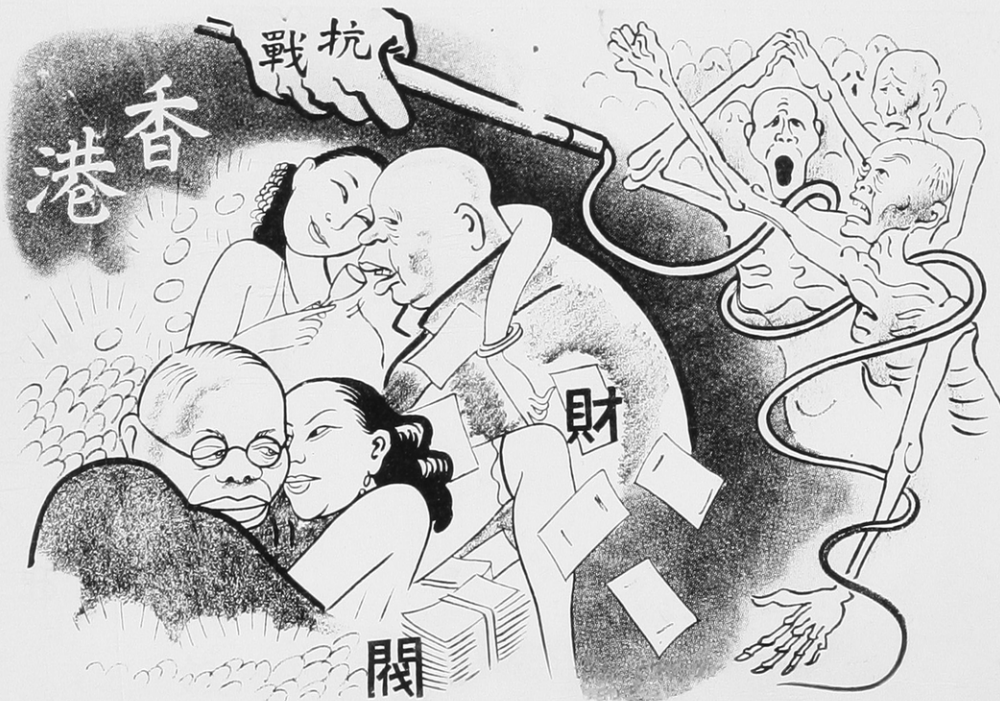
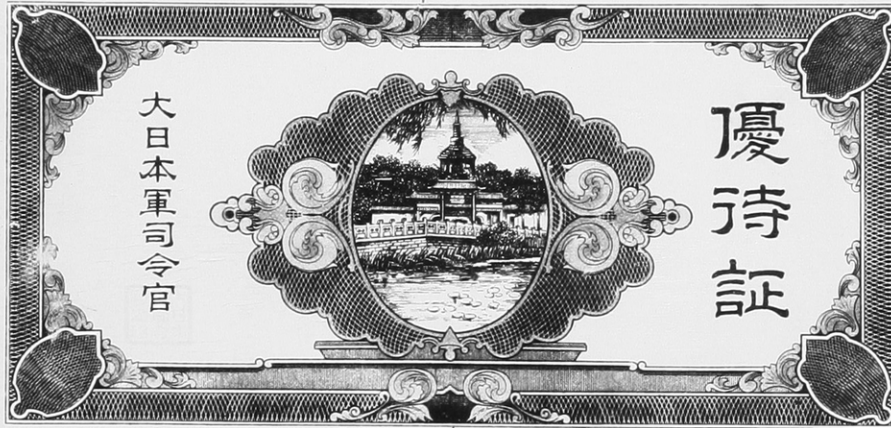
AGNES SMEDLEY
COLLECTION
VOLUME 41
GROUP D PLATE #27-1
thru
GROUP E PLATE #13-8

ARIZONA STATE UNIVERSITY
ARCHIVES

GROUP D PLATE # 27 - 1

Japanese propaganda leaflets dropped by airplane over the New Fourth Army along the lower Yangtze. (2 types)

Japanese propaganda leaflets dropped by airplane over the New Fourth Army along the lower Yangtze.



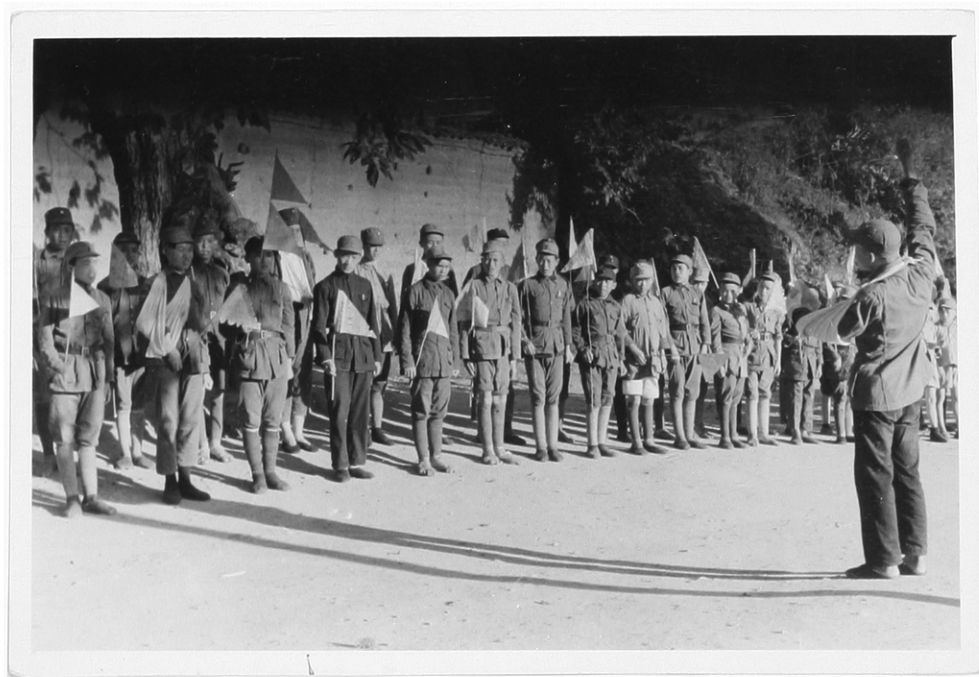
GROUP D PLATE # 27 - 2

For years I was on the highways and by-ways of China's battlefields. (I am the figure just behind the foremost figure.)



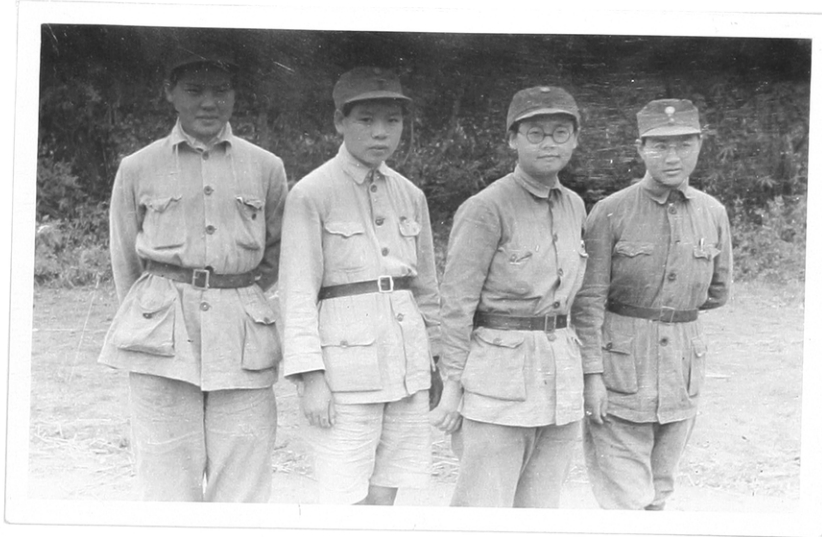
GROUP D PLATE # 27 - 3

Wounded of the New 4th Army hospital - Central Anhwei.



GROUP D PLATE # 28 - 1

New Fourth Army - Girls trained as nurses.



GROUP D PLATE # 28 - 2

Left to right: General Mei, commander of the 84th Army;
one of the high military Inspectors who reviewed the front;
Lt. General Chung Yi, Commander of the 173rd Division.



GROUP D PLATE # 28 - 3

New 4th Army sick and wounded



GROUP D PLATE # 28 - 4

A dead child - result of an air raid



GROUP D PLATE # 29 - 1

A group of students leading a campaign for the daily newspaper of the People's Mobilization Committee, the Ta Pieh Shan Er Pao.



GROUP D PLATE # 29 - 2

A group of doctors of the New Fourth Army. Second from the left is Dr. Tzwei, who was captured and tortured into insanity but who recovered after a year and a half. Third from the left is Dr. Chang, only woman doctor at the front, who was always looking for "cadavers." Fifth from the left is Dr. Shen, Medical Director of the Army. Last in the line is Dr. N. C. Gung who led the first medical unit into the enemy rear north of the Yangtze.



GROUP D PLATE # 29 - 3

Chang Pei-chuan, editor of the largest and most important anti-Fascist, democratic daily in the enemy rear; one of the most important leaders in the People's Mobilization Committee of Anhwei Province in 1938-39.



GROUP D PLATE # 30 - 1

Wounded men of a guerrilla army along the Tientsin-Nanking railway. All are local farmers who were wounded fighting the Japanese.
(Photo by Agnes Smedley)



GROUP D PLATE # 30 - 2

Troops of the New 4th Army Storm Guerrilla Detachment in snowstorm north of Hankow.



GROUP D PLATE # 30 - 3

A guerrilla unit of the New 4th Army Storm Guerrilla Detachment in the enemy rear along the Peking-Hankow Railway north of Hankow.



GROUP D PLATE # 30 - 4

The whole population of towns and villages gathered in groves to avoid air raids, and there I told them of millions of foreign friends who hoped for their victory.



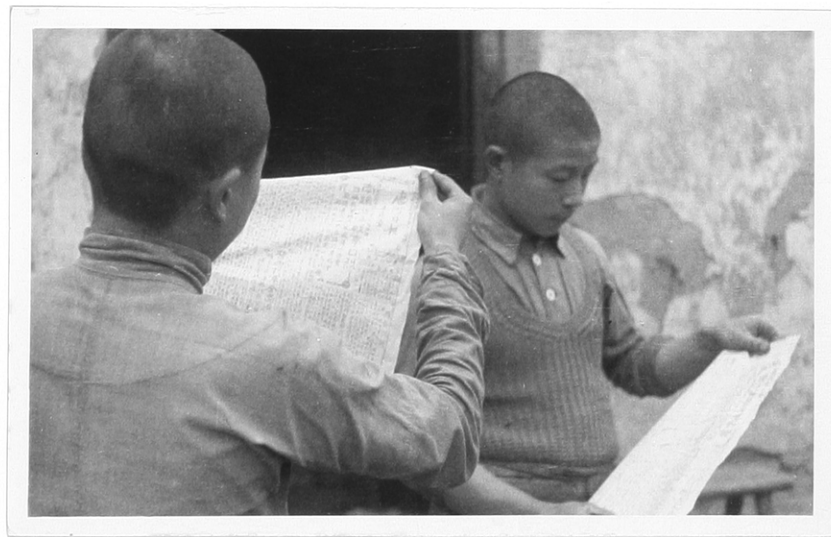
GROUP D PLATE # 31 - 1

I spent five weeks lecturing in the educational institutions of Lihwang, capital of Anhwei Province.



GROUP D PLATE # 31 - 2

The Tangho Pao was a small newspaper published by hand by one editor and these two printers.



GROUP D PLATE # 31 - 3

Children's Dramatic Corps of the New 4th Army Storm Guerrilla Detachment. To the extreme right, front row, is a girl school teacher who was in charge of them.



GROUP D PLATE # 31 - 4

In the Women's Conference North of Hankow.



GROUP D PLATE # 32 - 1

On the plains of Honan Province we hailed a regiment of Kwangsi soldiers moving to the enemy rear in Anhwei Province. We stopped and exchanged news. (2 views)



GROUP D PLATE # 32 - 2

We watched the trench mortars in action (3 views)



GROUP D PLATE # 33 - 1

The Industrial Cooperative connected with the Orthopaedic Hospital of the Chinese Red Cross Medical Corps in Kweiyang teach trades to the maimed. (2 views)



GROUP D PLATE # 33 - 2

Returning to the Red Cross Medical Corps after 18 months at the front, I found a group of 16 European anti-Fascist doctors who had served with the Spanish Republican Armies and had been sent to China by the Norwegian Red Cross.



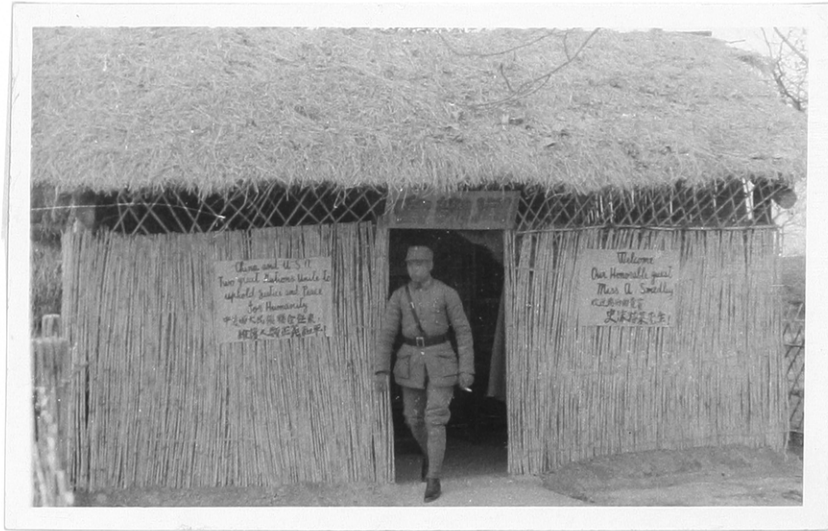
GROUP D PLATE # 33 - 3

I urge Chinese girl nurses of Hongkon to leave Hongkong and go the the front to serve their wounded countrymen.



GROUP D PLATE # 34 - 1

Officers Club Room of a regiment of the 173rd Division



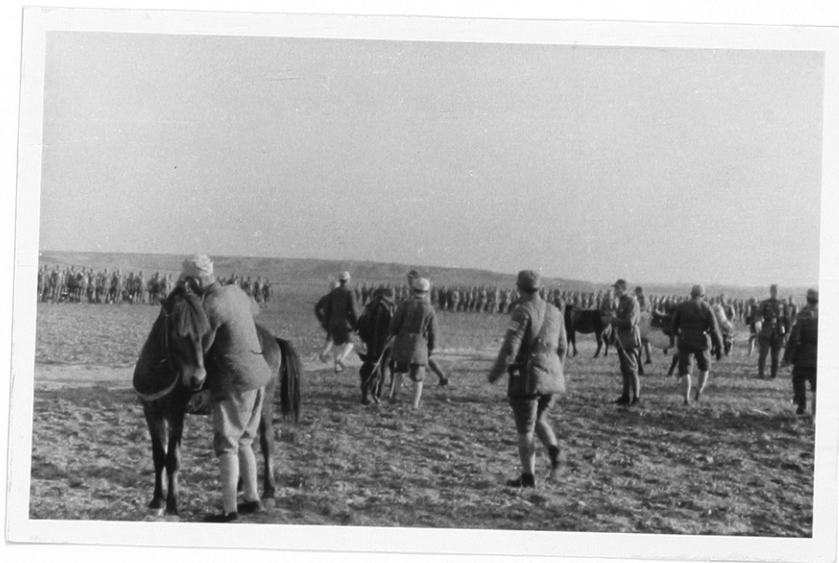
GROUP D PLATE # 34 - 2

Three young regimental commanders welcomed me to their regiment. In the center was the regimental commander who had never made a speech to a foreigner before.



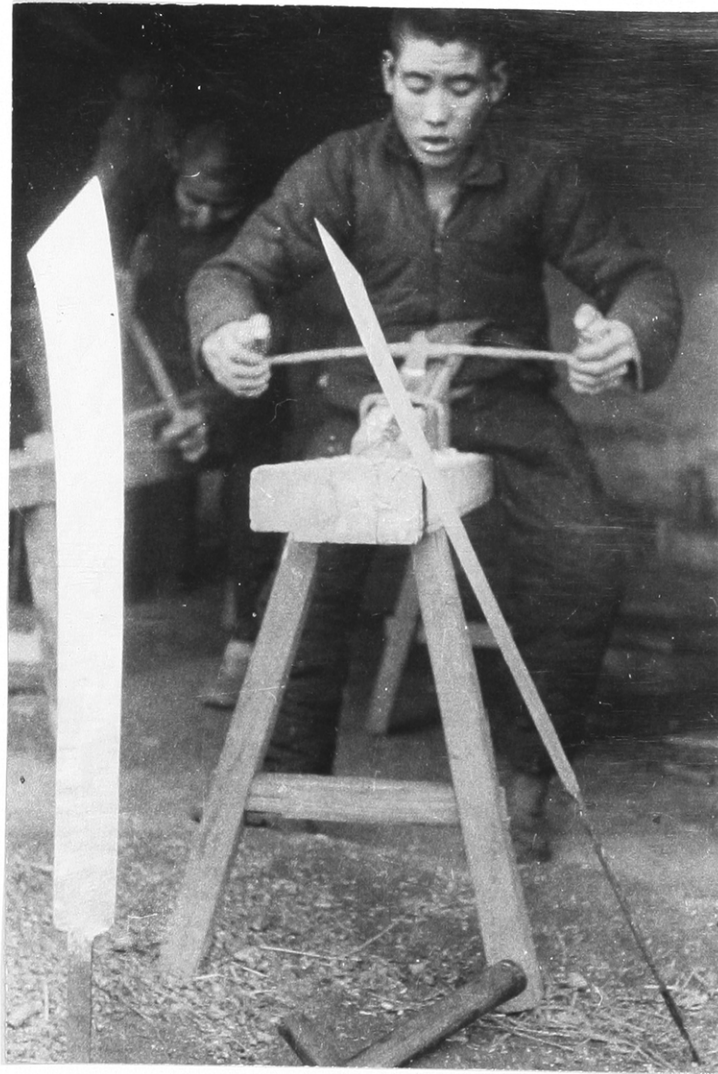
GROUP D PLATE # 34 - 3

The General Review of the 173rd Division on the Hupeh front
in preparation for the Winter Chinese Offensive (2 views)



GROUP D PLATE # 35 - 3.

Chinese armies and railway men tore up their railways to prevent the Japanese from using them. Then the railway men carried away the steel rails and girders and welded them into big swords for soldiers and guerrillas to fight the enemy. This is a Chinese railway worker, member of a group of 60 railway workers who banded together to form a cooperative. They use blacksmith forges and bellows to melt and weld the steel rails, then hammer them into swords for use against the enemy.



GROUP D PLATE # 35 - 1

Lieutenant General Chung Yi (in front of the banner); the older man to his right was the Vice-Commander. Nearest the camera was the young intellectual invited by General Chung to help him study. This was the breakfast of welcome to me. All of these men were killed in action.



GROUP D PLATE # 35 - 2

General Cheng Su-Yuan, Commander of the 124th Division of the 22nd Group Army and his Chief of Staff. For hours we talked across the candlelight. It was Christmas Eve, 1939.



GROUP D PLATE # 36 - 1

Railway workers on the old Peking-Hankow Railway tore up the rails and founded a small foundry in Chumatien, Honan where they turned rails into big swords for the armed forces (2 views)



GROUP D PLATE # 36 - 2

The peasants of Central China gathered in mass meetings where I spoke.



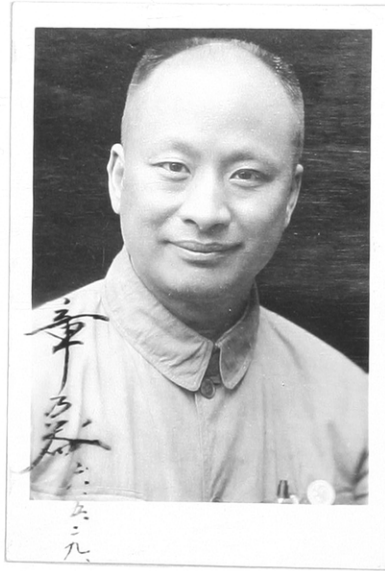
GROUP D PLATE # 36 - 3

Civilians studying in short-term courses on methods of mass organization vx. the Japanese. New Fourth Army work near Hankow.



GROUP D PLATE # 37 - 1

Mr. Chang Nai-chih, one of the "seven gentlemen" imprisoned for leading the National Salvation Association for war against the Japanese; released after the war began. Later, Finance Commissioner of Anhwei Province -- until driven out because he was a democrat.



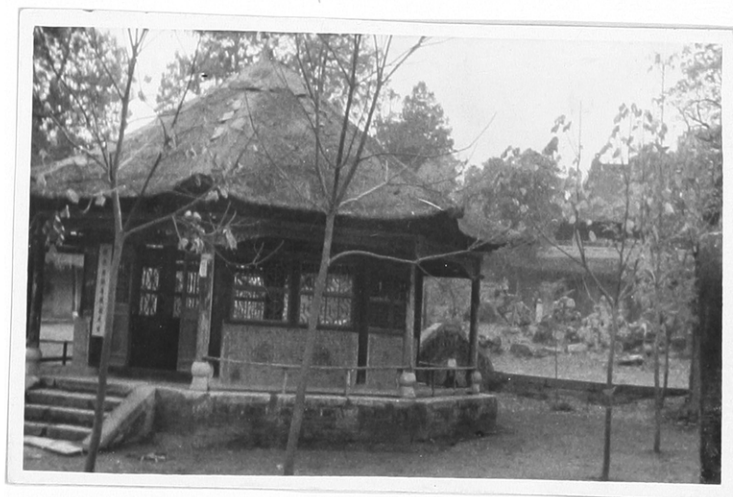
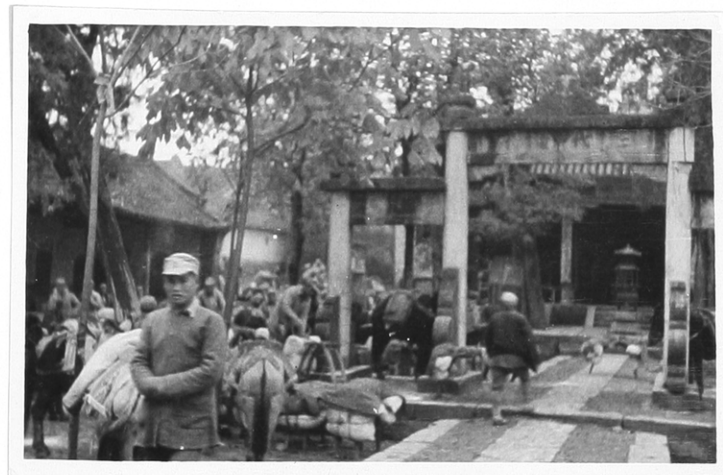
GROUP D PLATE #37 - 2

Young men and women under training as Financial administrators of Anhwei Province -- A Training School founded by Mr. Chang Nai-chih.



GROUP D PLATE # 37 - 3

Where the last Han Emperor argued with the famous statesman and strategist, Chu-Keh-liang, to become Prime Minister. (3 views)



GROUP D PLATE # 38 - 1

Soldiers of the 84th Army (Kwangsi) at Tsaoyang, Hupeh Province, making straw mattresses for their barracks.



GROUP D PLATE # 38 - 2

I found soldiers of the Kwangsi Army sitting around a sand pit learning to read and write, taught by lower officers or Political Soldiers.



GROUP D PLATE # 38 - 3

A short-term civilian training course in organization, sabotage and espionage against the Japanese, conducted by the New Fourth Army Storm Guerrilla Detachment.



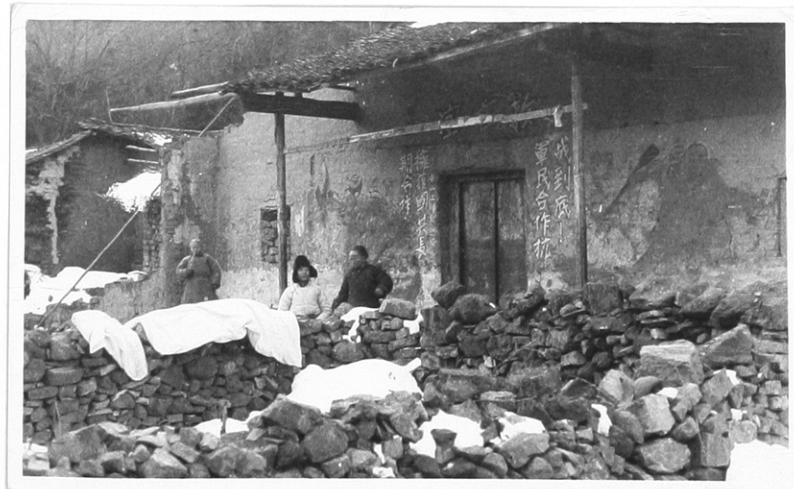
GROUP D PLATE # 38 - 4

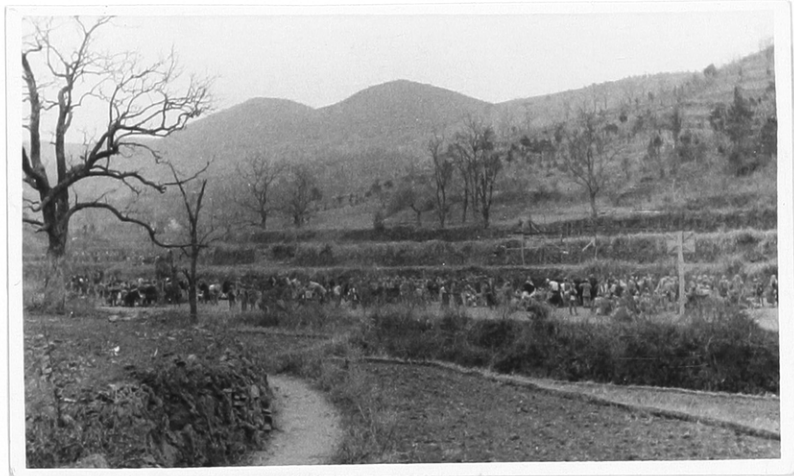
A woman's conference was called in the region in the enemy rear. Here are the delegates.

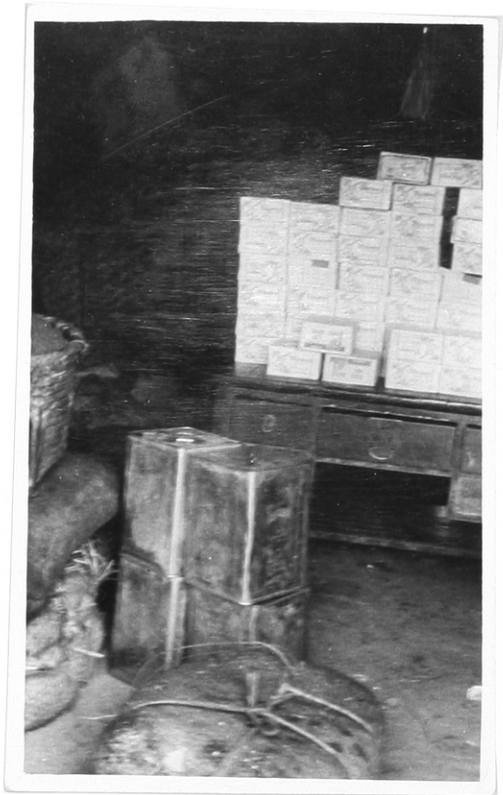


GROUP E PLATE 1

Nine unidentified photographs.



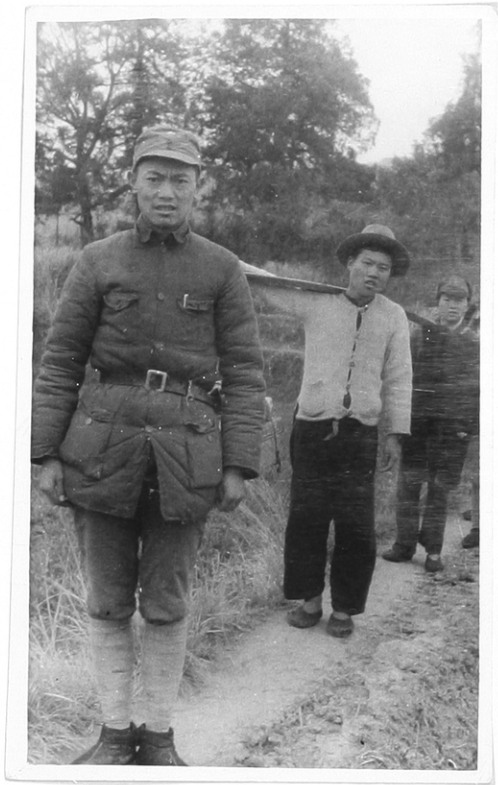




GROUP E PLATE # 2

Eight unidentified photographs.



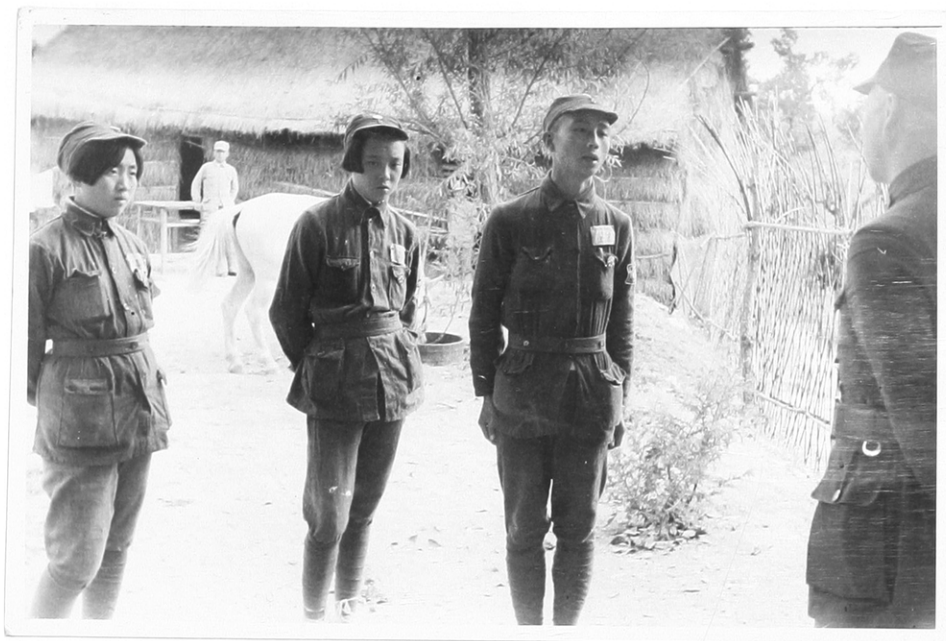


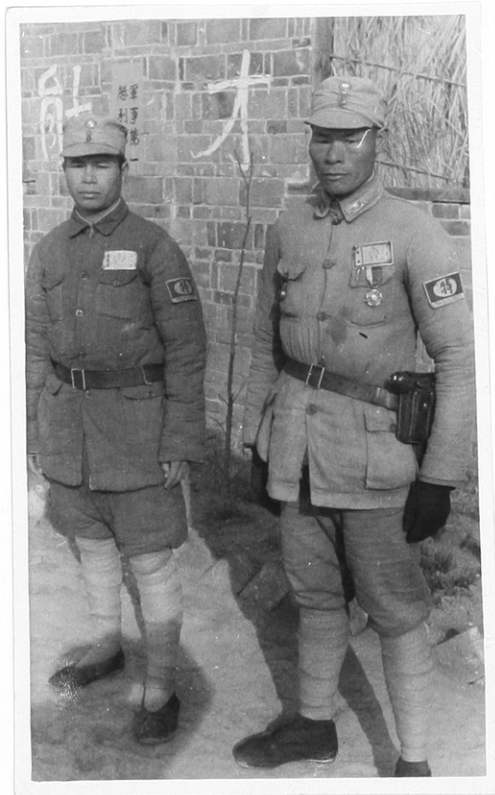


GROUP E PLATE # 4

Eight unidentified photographs.

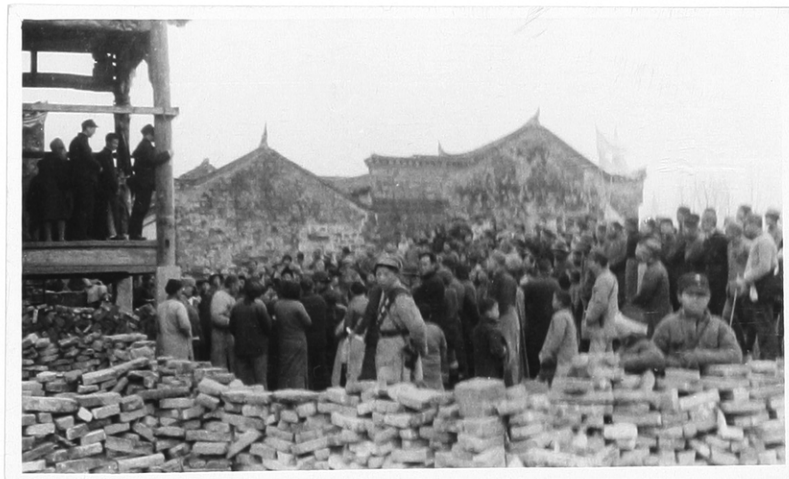


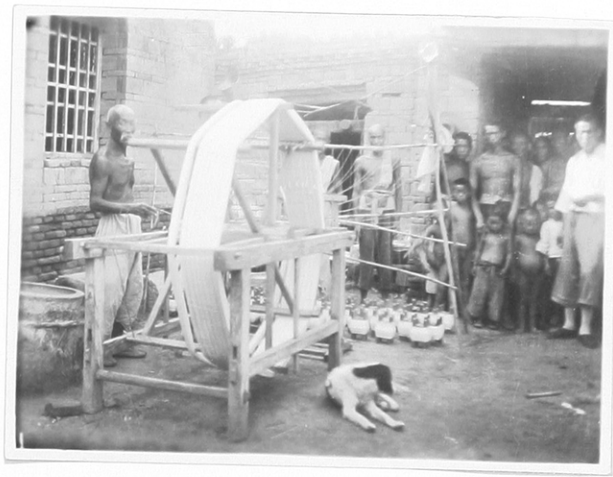
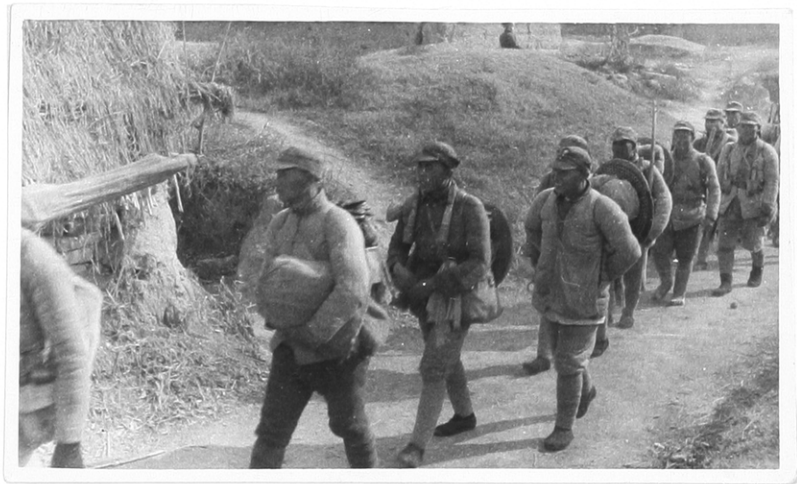




GROUP E PLATE # 3

10 unidentified photographs.



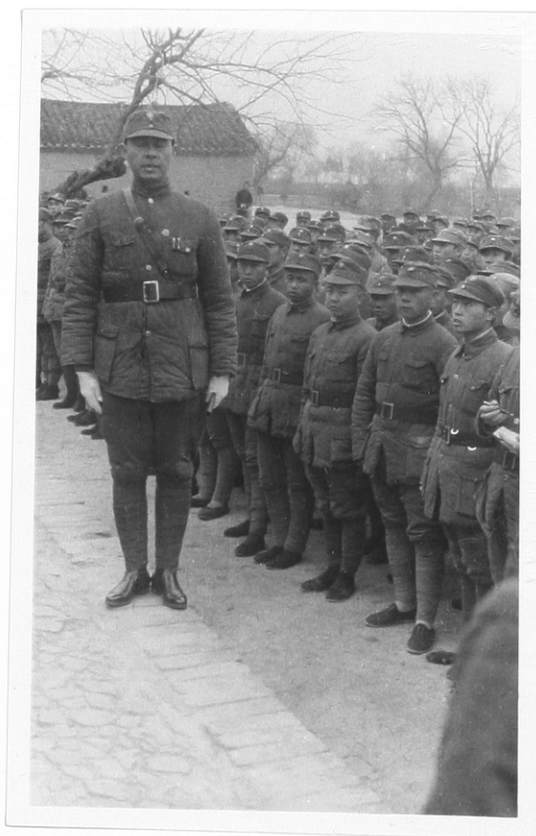




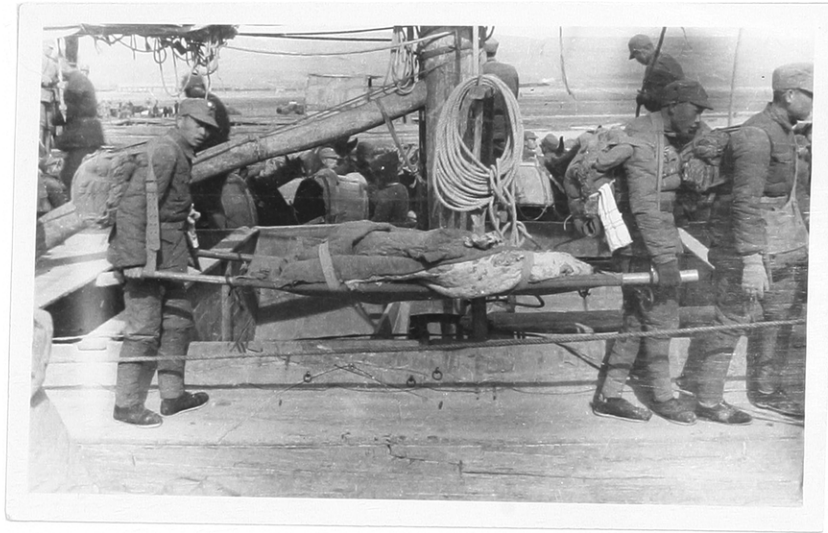
GROUP E PLATE # 5

Eight unidentified photographs.







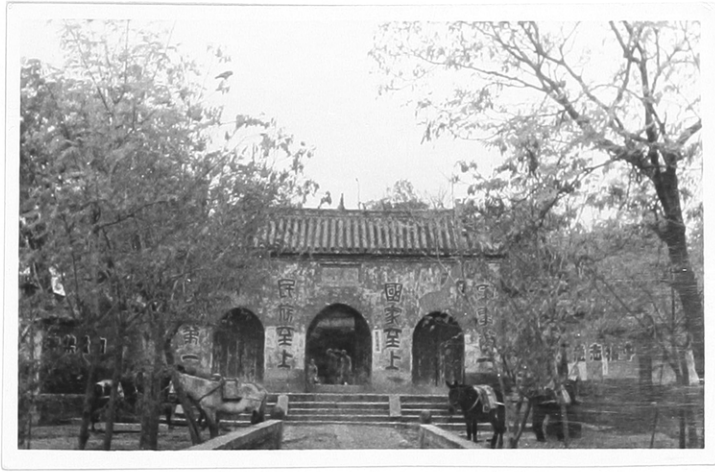


GROUP E PLATE # 6

Seven unidentified photographs.

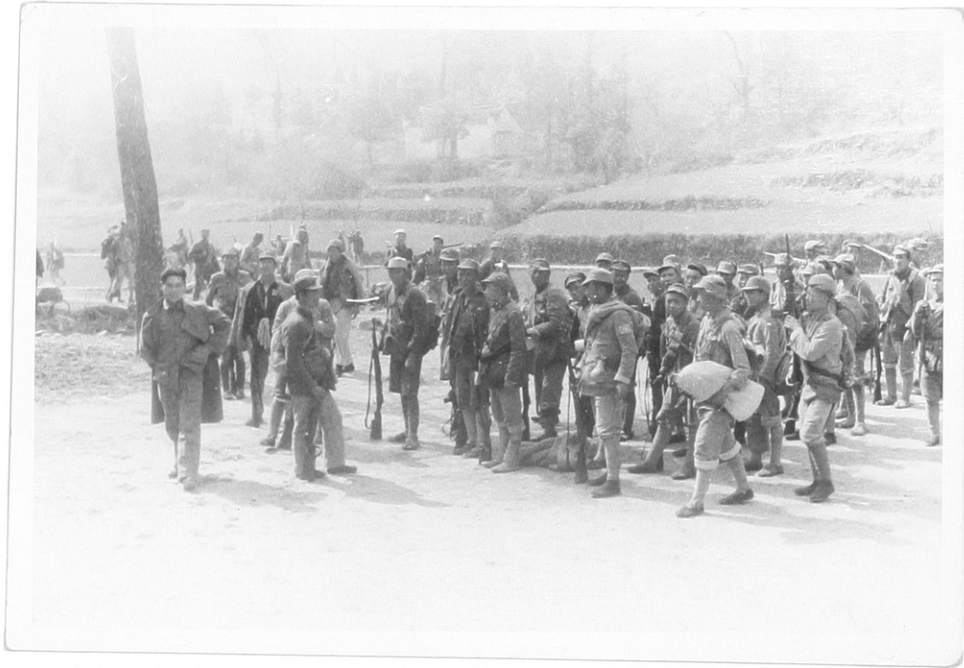






GROUP E PLATE # 7

Eight unidentified photographs.





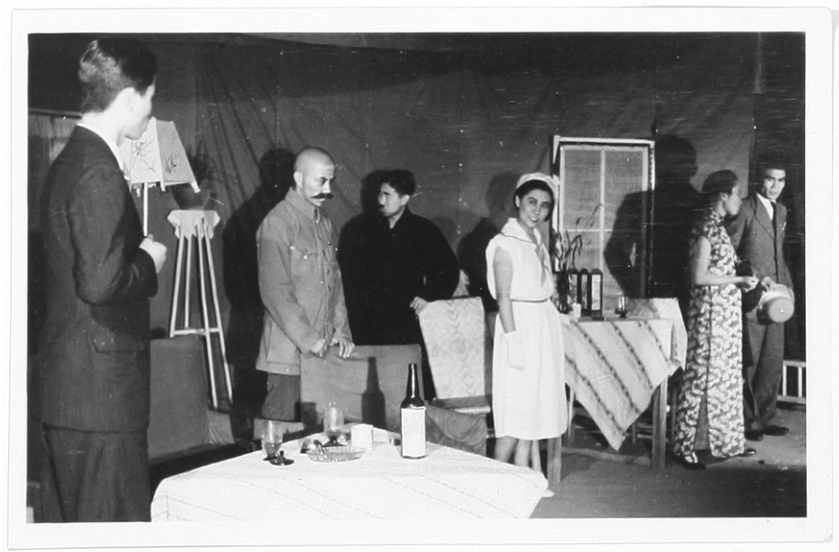


GROUP E PLATE # 8

Eight unidentified photographs.





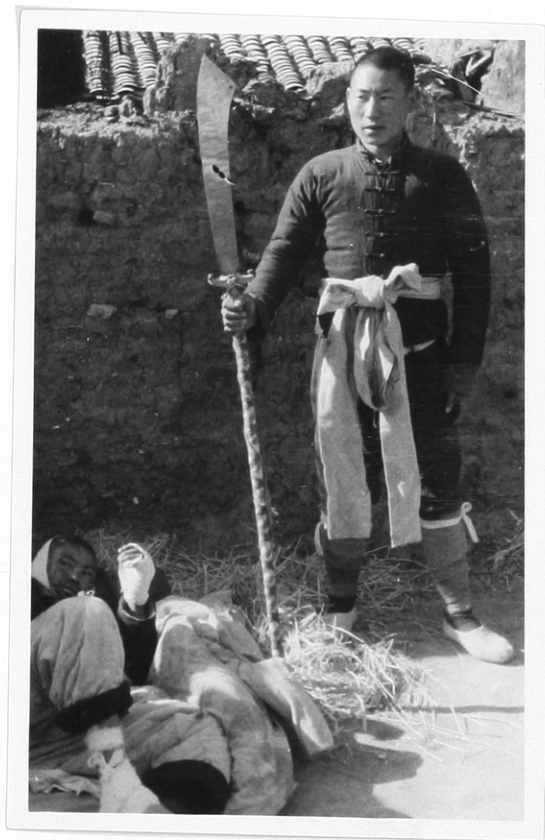


GROUP E PLATE # 9

9 unidentified photographs.







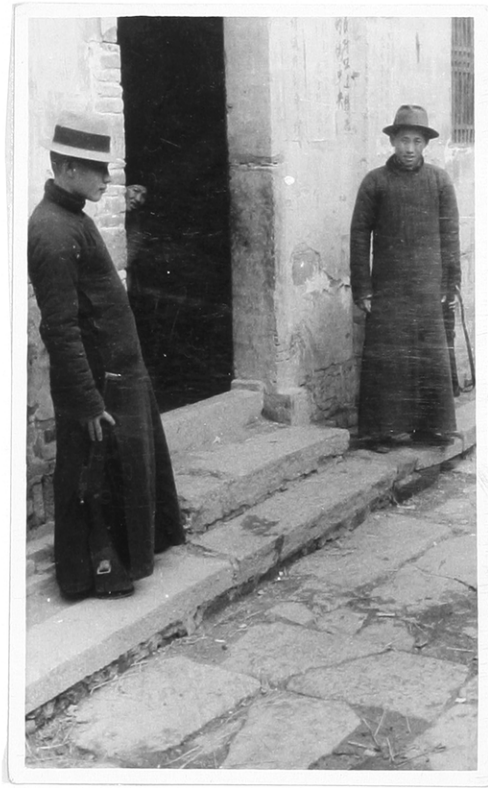


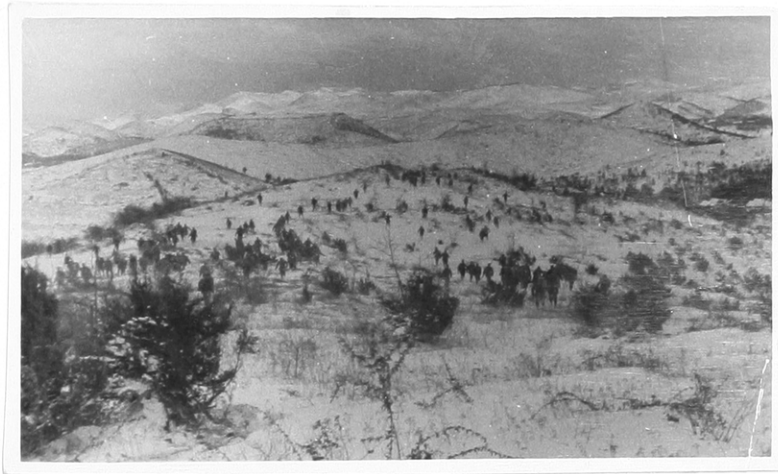
GROUP E PLATE # 10

Nine unidentified photographs.









GROUP E PLATE # 11

Nine unidentified photographs.









GROUP E PLATE # 12

Eight unidentified photographs.









GROUP E PLATE # 13

Eight unidentified photographs.





