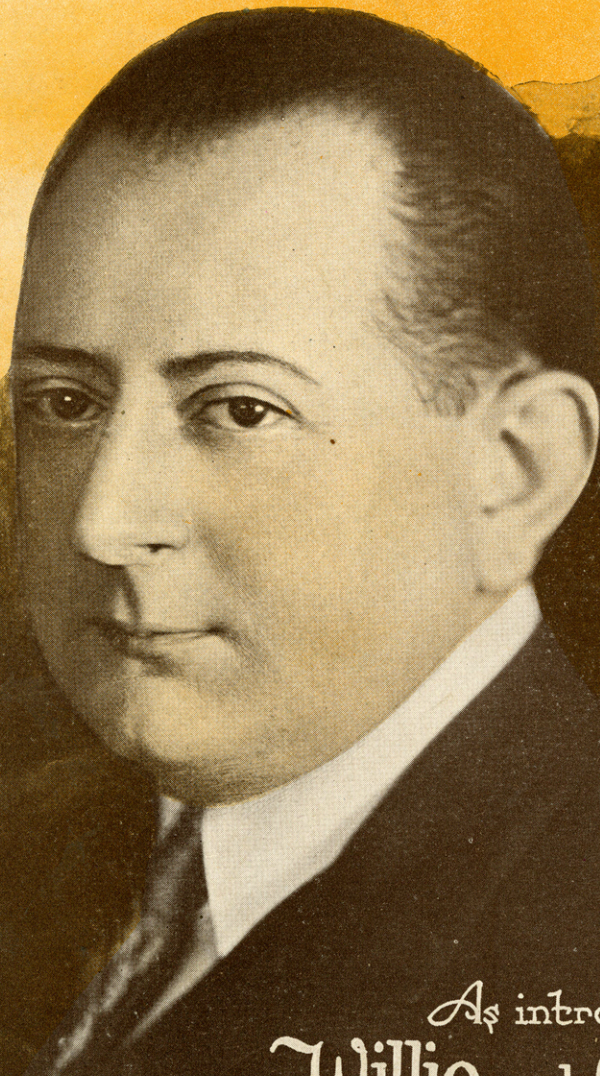


OPERATIC EDITION
Do you, Dont you, Will you, Wont you.
(Love Me Too)

By

**GEORGE A. LITTLE
LARRY SCHAEZLEIN
and
HOWARD BROTHERS**

FRANK J. HARRIS
Southern
California Music
Company
119 E. 3rd St.
LONG BEACH, CALIF.



As introduced by
Willie and Gene Howard
in the **PASSING SHOW** of 1922
at the Winter Garden, New York City.



JEROME H. REMICK & CO.
NEW YORK DETROIT

SM5534

Do You, Don't You, Will You, Won't You

(Love Me Too)

By GEORGE A. LITTLE,
LARRY SCHAEZLEIN
and HOWARD BROS.

Moderato

The first system of piano accompaniment consists of two staves. The upper staff is in treble clef and the lower in bass clef. The tempo is marked 'Moderato'. The music features a series of chords and melodic lines. A section labeled 'VAMP' begins with a double bar line, marked with a dynamic of *mf*. The piece concludes with a repeat sign.

John-ny Green had a queen sweet lit - tle girl
John-ny's queen did - n't dream what love would do

The second system shows the vocal melody on a single staff and the piano accompaniment on two staves. The lyrics are: "John-ny Green had a queen sweet lit - tle girl / John-ny's queen did - n't dream what love would do". The piano part includes a dynamic marking of *p* at the beginning.

But this queen with his heart would play _____
John - ny soon proved he was - n't slow _____

The third system continues the vocal melody and piano accompaniment. The lyrics are: "But this queen with his heart would play _____ / John - ny soon proved he was - n't slow _____". The piano part continues with chords and a melodic line.

Copyright MCMXXIII by JEROME H. REMICK & CO., New York & Detroit

Copyright, Canada, MCMXXIII by Jerome H. Remick & Co.

Propiedad para la Republica Mexicana de Jerome H. Remick & Co., New York & Detroit. Depositada conforme a la ley

Performing rights reserved

Made in U.S.A.

He'd pro - pose good-ness knows how of - - - ten
 Had a friend just pre - tend to list - - - en

Near - ly ev - 'ry night he'd say _____
 Then sang on her ra - di - o _____

CHORUS

Can't you hear me say - ing, "Do you, Don't you, Will you, Won't you love

me true _____ Why should I be blue when just a lit-tle

word from you would make the world seem new Can't you see a

Handwritten annotations: *1e* above the first measure, *3a* above the last measure.

co-zy lit-tle love nest In a world that was meant for two

Handwritten annotations: *1am* above the first measure, *39* above the second measure, *30* above the last measure.

I love you just you so Do you, Don't you, Will you, Won't you

Handwritten annotations: *1Em* above the first measure, *34* above the last measure.

love me too" Can't you too"

Handwritten annotations: *3a* above the first measure, *3c* above the second measure, *1e* above the first measure of the second phrase, *12* above the second measure of the second phrase.

BARNEY GOOGLE

REGISTERED U.S. PATENT OFFICE
Copyright, 1923, by King Features Syndicate, Inc. "Great Britain Rights Reserved"

By BILLY ROSE
& CON CONRAD

CHORUS

SONG

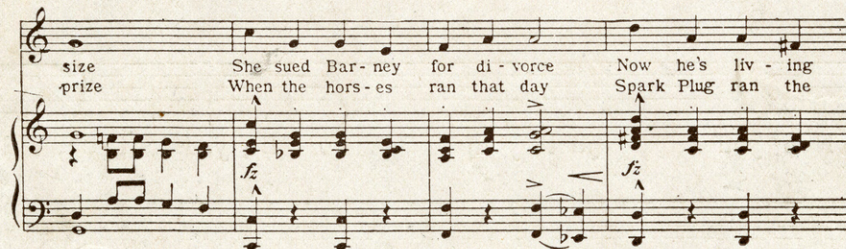
Bar - - ney Goo - gle with his Goo Goo Goo - gly
Bar - - ney Goo - gle with his Goo Goo Goo - gly



eyes Bar - ney Goo - gle had a wife three times his
eyes Bar - ney Goo - gle bet his horse would win the



size She sued Bar - ney for di - vorce Now he's liv - ing
prize When the hors - es ran that day Spark Plug ran the



with his horse Bar - ney Goo - gle with his
oth - er way Bar - ney Goo - gle with his



Copyright MCMXXIII by JEROME H. REMICK & CO., New York & Detroit

Copyright, Canada, MCMXXIII by Jerome H. Remick & Co

Propiedad para la Republica Mexicana de Jerome H. Remick & Co., New York & Detroit. Depositada conforme a la ley

325-A

MADE IN U.S.A.

Performing Rights Reserved

