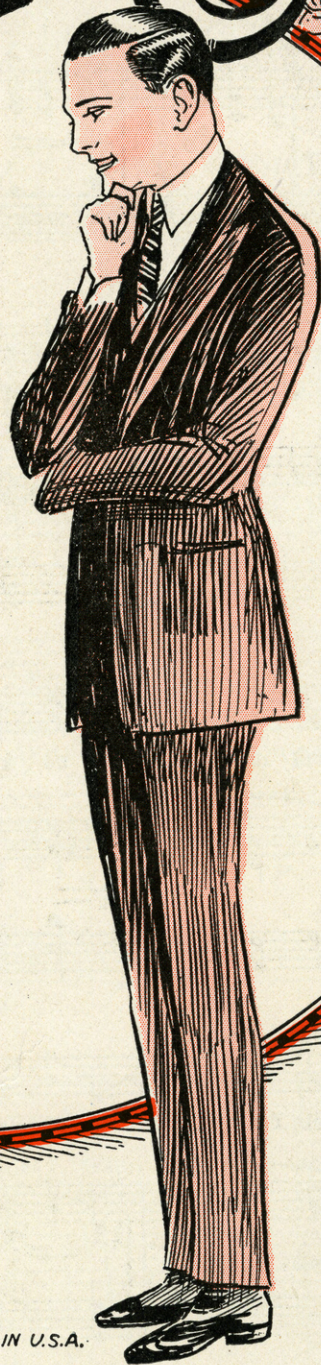
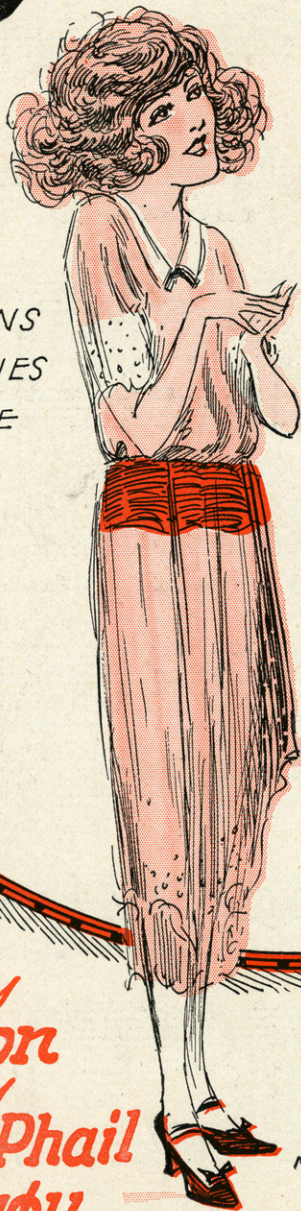


Foolish Child

FEATURED BY
BROOKE JOHNS
OF
ZIEGFELD FOLLIES
AT THE
MONT MARTE
NEW YORK, CITY



Barbelle

Lyric By
Jack Nelson
Music By
**Lindsay McPhail
& Roy Bargey**

MADE IN U.S.A.



Brooke Johns

Constance L. Williamson

Lyric by
HAVEN GILLESPIE

HONEY, DAT'S ALL

Music by
EGBERT VAN ALSTYNE

Andante

Con espressione

L.H.

The piano introduction for the first system consists of two staves. The right hand (RH) begins with a series of chords and a melodic line, marked with a piano (*p*) dynamic. The left hand (LH) provides a harmonic accompaniment. The system concludes with a *rall.* (ritardando) marking and a *pp* (pianissimo) dynamic.

The first line of the song features a vocal melody and piano accompaniment. The lyrics are: "Jes' a lit-tle hon-ey-bee Buz-zin' roun' yo' mam-my's knee,". The piano accompaniment is marked *pp*.

The second line of the song features a vocal melody and piano accompaniment. The lyrics are: "Black and ink-y, Haid so kin-ky, sweet as yo' can be,". The piano accompaniment includes a *rit.* (ritardando) marking.

The third line of the song features a vocal melody and piano accompaniment. The lyrics are: "An-gels brought yo' in da night, Done for-got to make yo' white." The piano accompaniment is marked *a tempo*.

Copyright MCMXXI by Van Alstyne and Curtis 1658 B'way, N.Y.
International Copyright Secured All Rights Reserved

You c
Phon
Rec
Playe
of
Foolis
Ask
Yo
De

SM 5545

Foolish Child

3

Words by
JACK NELSON

Music by
LINDSAY McPHAIL
and
ROY BARGY

Moderato

Piano introduction in G major, 4/4 time, marked Moderato. The music begins with a treble clef and a bass clef. The right hand plays a series of chords and single notes, while the left hand provides a steady bass line. The tempo is marked Moderato.

VOICE

Vocal line and piano accompaniment for the first verse. The vocal line is in G major, 4/4 time. The piano accompaniment is marked *Vamp*. The lyrics are: "You're all the time / You've heard of the".

Vocal line and piano accompaniment for the second verse. The vocal line is in G major, 4/4 time. The piano accompaniment is marked *Vamp*. The lyrics are: "flirt-ing, You know it is hurt-ing, And some-times I, think you don't / tur-tle, The slow mov ing tur-tle, And I guess you've heard of the".

Vocal line and piano accompaniment for the third verse. The vocal line is in G major, 4/4 time. The piano accompaniment is marked *Vamp*. The lyrics are: "care, _____ You know I am true, And wild a-bout / here, _____ I'm not much for speed, But child, now you".

you, Why don't you try to play fair: _____
 need Some - one like me who will care: _____

CHORUS

Fool - ish child, why go wild ov - er Har - ry _____ Fool - ish

p f

child think a while a - bout me _____ Ev - 'ry eve - ning in the

week You have some brand new sheik, And you know I don't like it at

all; _____ When I call your front hall's like a check room, _____

_____ I could throw ev - 'ry beau out the door, _____ You

like me you know it, so why don't you show it, Fool-ish child, please go

wild 'bout me. _____ Fool-ish me. _____

an get
A
graph
ord
or
r Roll
Child
ur
ler



YOU SHOULD HAVE ON YOUR PIANO
A COPY OF

How Can You Love Somebody Else

(When I've been so faithful to you)

TRY THIS REFRAIN.

GET IT NOW.

How can you love some-bo-dy else, af-ter I've been so faith-ful and

p-mf

true, I brought you smiles, when you were sad, Been the best pal that

you ev-er had, Just like a child, tired af-ter play, You break my

For Sale Wherever Music is Sold
If for any reason your dealer cannot supply you, send 30c. direct to the publishers and you will receive prompt and courteous attention. Send all orders to

L. B. CURTIS, Music Publisher
Successor to Van Alstyne & Curtis
1658 Broadway, NEW YORK